

## Holy Week & Easter: What are they all about?

*Reprinted from The Presbyterian Outlook (April 1, 2015 by Religion News Service)*

Holy Week, the most sacred time of year for Christians. It is the time they mark the betrayal, trial and crucifixion of Jesus, and a week that culminates in Easter Sunday, the day Christians believe Jesus rose from the dead. So what do colored eggs have to do with anything?

### **Q: Is Holy Week really a whole week? I only know about Good Friday and Easter Sunday.**

A: Holy Week is the entire week between Palm Sunday and Easter Sunday. Not a whole lot happens on Monday and Tuesday, but some Christians mark the crucifixion on Wednesday, and some celebrate Maundy Thursday, the day of the Last Supper, Jesus' final Passover meal with his disciples. It is sometimes celebrated with a foot-washing ceremony, a tradition beloved by Pope Francis, and a "Pascha" or "Paschal" meal, derived from the Jewish Passover Jesus would have known. Then comes Good Friday, Holy Saturday and Easter Sunday. Fun fact: Not all American Christians greet each other with "Happy Easter." To many evangelicals, the day is "Resurrection Sunday," in part because they believe the word "Easter" has pagan roots.

### **Q: What is so "good" about Good Friday, the day Jesus was horribly tortured to death?**

A: One strand of thought goes like this: Jesus had to suffer whippings, beatings and a ring of thorns before being nailed to a cross and hung until he died. A bedrock Christian tenet is that Jesus died so horribly so as to save his followers from their own sins. And that's "good."

But "Good Friday" may also be an English adaptation of "Gottes Freitag," German for "God's Friday," an older version of the day's name. Or it may be a version of the German "Gute Freitag," or "Good Friday." Christians do not universally call this day "good." Eastern Orthodox Christians refer to it as "Great and Holy Friday" or just "Great Friday." In Denmark, the day is referred to as "Long Friday," which it certainly must have seemed to poor Jesus.

And not all Christians observe Good Friday. Some Baptists, Pentecostals, Seventh-day Adventists and nondenominational Christians mark the death of Jesus on Wednesday of Holy Week, which would mean he spent three full days dead before rising from the tomb.

### **Q: I don't get that. Christian liturgy contains some version of "on the third day he rose again," but there aren't three days between Good Friday and Easter Sunday. What's up with that?**

A: Jesus and his disciples were Jews and used the Jewish calendar, in which the day's start is marked not with the sunrise, but with the sunset. So if Jesus was crucified on Friday, that would be the first day. Sunset on Friday would be the beginning of the second day — Saturday — and sunset Saturday would start the third day — Sunday. Easter Sunday. Three days.

### **Q: So Happy Easter! Now, why am I eating an egg to celebrate?**

A: For that you can thank Mary Magdalene, one of the few named women in Jesus' circle and one to whom he first appeared as the risen Christ, according to the New Testament. There is a traditional story from the Orthodox tradition about Mary Magdalene trying to convert the Roman Emperor Tiberius Caesar with an egg, a symbol of the stone rolled away from Jesus' tomb. She handed Tiberius the egg with the greeting, "Christ is risen." Tiberius is supposed to have answered, "It is as possible for someone to rise from the dead as it is for that white egg to turn red." And then the egg turned bright red right there in the Magdalene's hand. Today, Orthodox Christians mark Easter Sunday with the greeting "Christ is risen" and the giving of red-painted eggs.





## April 2022 Worship Schedule

We continue our Sunday morning worship at 11:00AM in the sanctuary with various guest pastors, liturgists, and members of our music ministry. The service is livestreamed on Facebook and then posted to YouTube and SoundCloud within the next day or 2 for online viewing and listening.

### April 3 – 5<sup>th</sup> Sunday in Lent

We celebrate the Sacrament of the Lord's Supper in a Lenten worship service led by the Rev. Fairlight Collins Lower, who will preach a sermon titled "The Fox and the Hen" based on Luke 13:31-35.

### April 10 – Palm/Passion Sunday

As we begin our Holy Week journey, we remember both the pomp and circumstance of Jesus's triumphal entry into Jerusalem. We also recount the Passion in a Reader's Theater presentation created by Lisa Segedy.

### April 14 – Maundy Thursday

The Rev. Bob Ruefle returns to lead us in a communion worship that reminds us of the Last Supper and events that followed in the Garden, Jesus's betrayal, arrest, and crucifixion. The service begins at 7:00PM in the Sanctuary.

### April 15 – Good Friday

While we will not have a separate Good Friday service this year, you are welcome to come into the sanctuary during office hours (9AM-2PM) to sit in quiet reflection on our Savior's sacrifice on the cross for our sins.

### April 17 – Easter Sunday

Jesus Christ is risen today! Alleluia! Our resurrection celebration in worship is made that much more special by the return of former FPCE pastor, the honorably retired Rev. Michael Rucker. Pastor Michael will lead us in the Easter service he didn't get to during his last few months with us due to our move to virtual worship in April 2020. The service will include Holy Communion.

### April 24 – Second Sunday of Easter

As we continue into the 6 Sundays in the season of Easter, we are joined in worship this week by the Rev. Kellie Weekley-Mills. We last saw Kellie in our pulpit leading our Christmas Eve service.



120 East Swissvale Avenue  
Pittsburgh, PA 15218  
[www.fpcedgewood.org](http://www.fpcedgewood.org)  
412-241-4613



*Believing we are  
called together  
by God's love  
through Jesus Christ,  
our mission as the  
First Presbyterian Church  
of Edgewood  
is to love God,  
to love each other,  
and to love our neighbors.*

## OUR CHURCH FAMILY

Office & Cleaning Manager  
**Judy Mysels**  
[office@fpcedgewood.org](mailto:office@fpcedgewood.org)

Building Manager  
**Rob Mysels**  
[building@fpcedgewood.org](mailto:building@fpcedgewood.org)

Minister of Music  
**Shaun Cloonan**  
[music@fpcedgewood.org](mailto:music@fpcedgewood.org)

Pianist  
**Sunny Sakai**  
[sunnysakai4@gmail.com](mailto:sunnysakai4@gmail.com)

**LOVE GOD  
EACH OTHER  
OUR NEIGHBORS**

# Session Notes

Session and Deacons held a joint meeting in March. Rev. Khylllep led activities which included our thoughts on values and gifts of our church, spiritual formation, parish life and ministry to our neighborhood, and stewardship of resources. Following several group activities, Session conducted their monthly meeting and the Deacons adjourned to revisit these ideas. Session will revisit these ideas at a later meeting.

During March Session approved the following:

- Use of our Sanctuary by the Munhall Community Band for a concert on 5/21/22.
- Optional use of masks in the Sanctuary but continuing to require social distancing during worship.
- Use of the Lounge or Gathering Place by Angel Rich for a Mindfulness Group to meditate on March 26 and April 23 with additional dates to be added.
- Purchase of an ad to be placed in the WHHS musical's program of their production of Shrek.

## Per Capita Reminder

We do not believe in being lone rangers in the PC(USA). We need each other as we work together to share the good news of Jesus Christ. As we benefit from the gifts, skills, vision, and ministry of each other in this place, so, too, do we benefit from an even wider array of gifts and ministry of our Presbyterian brothers and sisters across the church. Your per capita pays for the programs, training, and resources that help us work together and discern the mind of Christ for the PC(USA).

### Per Capita Apportionment for Pittsburgh Presbytery

	2021	2022
Presbytery	\$23.44	\$23.41
Synod	\$2.40	\$2.40
GA	\$8.95	\$8.98
<b>TOTALS:</b>	<b>\$34.79</b>	<b>\$34.79</b>



## ONE GREAT HOUR OF SHARING

### SPECIAL OFFERINGS

HUNGER • DISASTER • DEVELOPMENT

Europe is facing its largest humanitarian crisis since World War II. The United Nations estimates up to 18 million people, both internally displaced and refugees, will eventually be impacted. According to reports from Action by Churches Together (ACT) Alliance, Ukrainians are facing reduced or disrupted services in water, heating, electricity, transportation, and telecommunications. Health services have deteriorated rapidly due to shortages of medical supplies and personnel. Refugees, mostly women, children, people with disabilities and the elderly, had to leave their homes and spend days traveling to neighboring countries for safety, with almost nothing with them.



Your gifts to One Great Hour of Sharing allow for an immediate response from Presbyterian Disaster Assistance (PDA) when emergencies first occur, often responding to crises that never make it into the news. In this volatile situation, PDA was able to provide urgent funding to trusted, established partners with the expertise to carry out humanitarian aid. Reformed and Orthodox church partners, like the Community of St. Egidio and Hungarian Reformed Church Aid, are working closely with local churches and organizations to provide food, water, clothing, shelter, psychosocial support, and other basic items for survival. They are the "boots on the ground," listening and responding to the needs of those impacted.

To stay informed about the work Presbyterians are doing in and around Ukraine, visit [pcusa.org/pda/ukraine](https://pcusa.org/pda/ukraine). To learn more about One Great Hour of Sharing and the vital ministries it supports, visit [pcusa.org/oghs](https://pcusa.org/oghs).

In this season of Lent, pray for our siblings in Ukraine. Pray for peace. And pray that all of us will remember that we are the Church, together.

WAYS TO GIVE — Through your congregation • Online at [pcusa.org/give-oghs](https://pcusa.org/give-oghs) • Text OGHS to 91999



# FOCUS CHRISTIAN EDUCATION

## Tuesday Book Club

Our weekly Book Club has begun discussing the book "Have a Little Faith" by Mitch Albom. This group meets at 10:00AM on Tuesdays at the home of Rhonda Apossos, 361 Maple Avenue, just a few blocks away from the church. All are welcome!

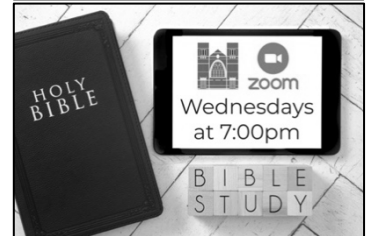
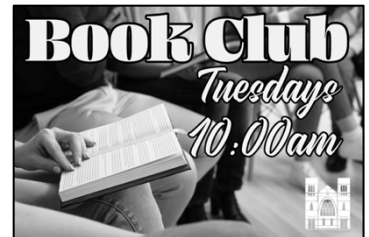
## Wednesday Night Zoom Bible Study

Our weekly Bible Study is held on Zoom each week led by Elder Tim Hoffman. The Zoom link is available on the website and in the weekly member email updates. No password is needed, just the link. Tim will let you in from the waiting room as you join. Come and join the discussion on Wednesday nights at 7:00pm online!

Questions? Email to Tim at [HoffmanTL@gmail.com](mailto:HoffmanTL@gmail.com).

## Sunday School

Sunday School for our littlest ones takes place during worship in the Gathering Place. Just drop your child off and Rhonda, Nancy, or Lorraine will lead them in a Bible activity while you are in worship!



## PNC Update

Your Pastor Nominating Committee has continued along the path to bringing a new leader to FPCE. During the early part of March the team held several second-round interviews. They then submitted a list of potential candidate names to Brian Wallace at the Presbytery to conduct what are called "executive reference checks," which are opportunities for Presbytery staff members (from wherever the candidate is or has been most recently) to provide feedback about their current or most recent relationship with a congregation and/or presbytery. If Brian knows the person, he comments personally. If they are outside of the Pittsburgh area, he contacts his counterpart in that specific Presbytery to get their thoughts. These are important in determining if there is anything that the committee may need to be aware of before continuing in conversations with a potential pastor. Assuming all is clear on the executive check, the candidate's personal references are contacted, which is what has been taking place for the second half of March.



## PASTOR SEARCH

As of the time of this newsletter's printing, the committee plans to meet to discuss the reference checks and determine the next steps moving forward. This may involve another conversation with a candidate, possibly bringing a candidate to town to visit Pittsburgh and the FPCE building, potentially setting up neutral pulpit meetings where the candidate leads a service at another church not affiliated with their current call or FPCE that the committee would attend to experience their worship leadership style in person rather than the videos or audio recordings provided in the initial evaluations before interviews.

This is an exciting time in the life of the Edgewood congregation as we move closer to discerning God's call in continuing our ministry with a new pastoral leader. Please continue to pray for the committee, the mission of FPCE, the search process, and the openness of our congregation to the possibilities yet to come in our shared ministry as siblings in Christ.

## New Meditation Group

FPCE is now hosting a new, community-led meditation group. Quiet your mind and tend to your heart. Join us for a community gathering of meditation. We'll have a short introduction to the purpose of meditation, followed by a 20-minute guided meditation and a contemplation of our experience. **Next meeting is Saturday, April 23 at 2:00PM in the FPCE Lounge.** Free, no registration necessary. Just come. Call Angel for questions: 412-865-5636.





## Community Dinners Return

We're Back – Almost...The Community Dinners are back, or at least they will be very soon. Yes, after our little COVID break, we'll again be hosting the ever-popular FPCE Community Dinners starting in June!

**Save the Dates:** The First Wednesdays of June, July, August, and September, from 6–8PM we'll be firing up the grill on the side lawn with your favorites, plus some new, soon-to-be-favorites. And, as usual, they're FREE! So bring your family, friends and neighbors for good food and fellowship!!!

**June 1:** Hamburgers, Hot Dogs (of course there will be meatless versions for those who prefer that), and all the fixins'

**July 7:** Sausage & Pierogi Fest

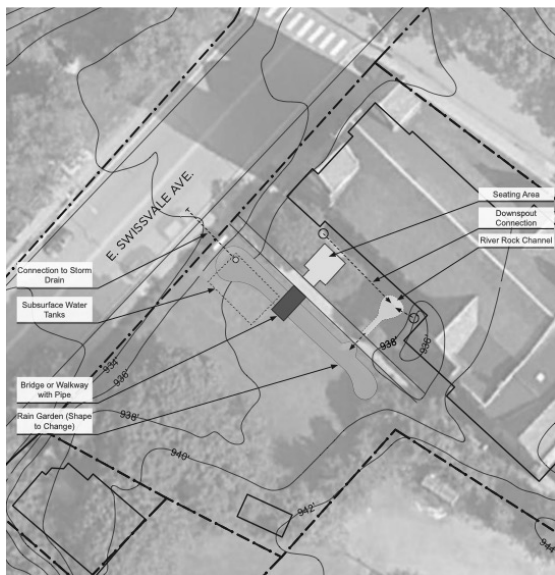
**August 3:** BBQ (Ribs, Brisket, Chicken, Pulled Pork)

**September 1:** Burgers and Dogs or Something Yummy.

## New Gardens Coming...

Spring has sprung and soon we will be making some improvements to the landscaping on the side lawn... With the help of Upstream Pittsburgh (formerly Nine Mile Run Watershed Association), designs are being developed to enhance the Contemplative Garden next to the church and to also install a rain garden to minimize the flooding that happens in the basement of the church every time we get a serious rain. The designs will include a quiet area for contemplation, a hydrophilic garden with subsurface reservoir to manage run-off (we are at the bottom of a hill) and potentially a community orchard and/or garden. All of these spaces will be located on the immediate south lawn of the church and will have minimal impact on the activities we normally have in this area. All of these will be designed to require minimal maintenance for three-season enjoyment.

Stay tuned for more details or see Jim or Lisa Segedy.



Rock Swale Example



Rain Garden Example



Bridge Example Over Rain Garden



Reclaimed Brick Seating Area

## Music Ministry Update

Just a few quick words of thanks to all for their patience while we “paused” our music ministry for the first part of 2022. It has been a joy to see and hear our Sanctuary Choir and Worship Ensemble back in our Sunday morning services. We look forward to enhancing our worship with more meaningful anthems and songs of praise as we continue through Lent and into the Easter season. — Shaun

# The Bulletin Board

## Sharing the Joys & Concerns of the FPCE Family

- Congratulations to Ruth Miller (Nonamae) on the birth of her great granddaughter, Auora June Petro, born March 15 to parents Alexa and Michael Petro.
- Congratulations to Nancy Ernst on becoming a grandmother to Cruz Atlas Ernst, born February 8 to parents: Charlie and Rachel.
- Sympathies to the family of Hazel Wickstrom – long time member. Preceded in death by her husband, Lou in 2016. She was 100 when she died on February 27.
- Sympathies to Liz and Kurt Held in the tragic death of their great niece, Rebekah Knox, from an automobile accident.
- Sympathies to the family of Pauline Shay, who passed away at the age of 92 on March 26.
- Congratulations to our friends at Vocal Confluence who returned from their March 26 trip to Dayton, Ohio for the Barbershop Harmony Society's Johnny Appleseed District competition as Mixed Chorus Champions
- Congratulations to Spencer Lehrian for his performance as the Honorable Gerald Bolingbroke in the Central & Oakland Catholic High School production of "Me and My Girl."
- Congratulations to Shaun Cloonan on completing 2 weekends of this year's North Hills High School production of "Once Upon a Mattress." He was producer and lighting designer for this show, and heads to Disney with over 250 staff, chaperones, and students from the choir, band, and orchestra over Holy Week.



**Aurora  
June Petro**



### Calling all new parents/grandparents...

We are bringing back an old tradition – putting a rosebud on the chancel in honor of a birth of a baby in the immediate family of our members. This can be either a real rose (for those who want to take it home and preserve it) or a silk one – blue/pink or white with blue/pink ribbon. Contact Judy when this exciting news happens in your family so that it can be recognized by all in worship!

### March 2022 Updated In-Person Worship Guidelines

Due to the CDC's updated version of tracking COVID community levels, Allegheny County is now Low. As a result, the Worship Committee has begun to slowly relax some of our guidelines for in-person worship:

- **Masks are now optional for all in attendance.** We will continue to have a supply of disposable masks at the entrances to the church for those who wish to wear one during services.
- **Please continue to social distance in the marked pews.**
- The choir will continue to mask during their hour-long rehearsal but may choose to remove the mask during the performance of the anthem in worship.
- Out of respect for those who choose or need to continue wearing masks, our practice of passing the peace and sharing communion from our seats, as well as collecting the offering at the entrance to the sanctuary will not change.

We will continue to monitor cases and transmission levels and will relax or strengthen this guidance as health and safety protocols dictate. Thanks to all for their cooperation in keeping our church family healthy and safe. We understand that each person is different with the possible risks he or she may have. Live-streamed online worship will continue to be available on Facebook and YouTube for those who choose to stay home until they feel safe to rejoin in person.

# April 2022

Sunday	Monday	Tuesday	Wednesday	Thursday	Friday	Saturday
Meeting Locations: Book Club – Apossos Home AA – Social Room Vocal Confluence & ESO – Sanctuary Milepost6 – Basement Band Room Meditation Group – Lounge					1  5:00 Flute (L) 8:00 AA (SR)	2  8:30 AA (SR)
3 9:30 Choir (S) 11:00 Worship/ Communion (S)	4 <b>Easter Flower Deadline</b> 7:00 VC (S) 7:00 Scouts (SR)	5 10:00 Book Club  7:00 ESO (S)	6  7:00 Bible Study (Zoom)	7  2:00 Flute (L) 7:00 Milepost6 (B)	8  5:00 Flute (L) 8:00 AA (SR)	9  8:30 AA (SR)
10 PALM SUNDAY 9:30 Choir (S) 11:00 Worship (S)	11  7:00 VC (S) 7:00 Scouts (SR)	12 10:00 Book Club  7:00 Session 7:00 ESO (S)	13  7:00 Bible Study (Zoom)	14 MAUNDY THURS 2:00 Flute (L) <b>7:00 Service (S)</b>	15 GOOD FRIDAY  5:00 Flute (L) 8:00 AA (SR)	16  8:30 AA (SR)
17 EASTER 9:30 Choir (S) 11:00 Worship (S)	18  7:00 VC (S) 7:00 Scouts (SR)	19 10:00 Book Club  7:00 ESO (S)	20  7:00 Bible Study (Zoom)	21  2:00 Flute (L) 7:00 Milepost6 (B)	22  5:00 Flute (L) 8:00 AA (SR)	23  2:00 Meditation Group (L) 8:30 AA (SR)
24 9:30 Choir (S) 11:00 Worship (S)	25 <b>May Newsletter Deadline</b> 7:00 VC (S) 7:00 Scouts (SR)	26 10:00 Book Club  7:00 ESO (S)	27  7:00 Bible Study (Zoom)	28  2:00 Flute (L) 7:00 Milepost6 (B)	29  5:00 Flute (L) 8:00 AA (SR)	30  8:30 AA (SR)

## EASTER FLOWERS

We seek your help in making our sanctuary a place of graceful beauty and meaning on Easter morning. Through your donation, we can accomplish this:

I wish to contribute an Easter plant.      Lily \_\_\_\_      Tulip \_\_\_\_      Daffodil \_\_\_\_      Hyacinth \_\_\_\_

The wording for the bulletin is:

\_\_ In honor of \_\_\_\_\_

\_\_ In memory of \_\_\_\_\_

Order placed by \_\_\_\_\_

Please check:      \_\_\_\_ I would like to take the plant  
                              \_\_\_\_ I would like it to be planted in the Prayer Garden



The cost of each plant is \$9.00. Please send check (payable to FPCE or pay online at [fpcedgewood.org/donate](http://fpcedgewood.org/donate)) with form and return it to the Church Office. Deadline is April 4, 2022.



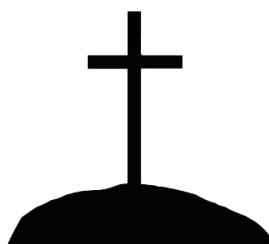
First Presbyterian Church of

**EDGEWOOD**

*The Community Church*

120 East Swissvale Avenue

Pittsburgh, PA 15218



A LOT CAN HAPPEN IN SEVEN DAYS.