



Rev. Michael Rucker Elected Pastor of FPCE

It's an exciting time here at the First Presbyterian Church of Edgewood! With the new calendar year, we officially name the Reverend Michael P. Rucker as our permanent, settled pastor. We welcomed Pastor Michael as Interim Pastor in October 2012, and several months later, the Pastor Nominating Committee began their work together. Committee members included Rhonda Apossos, Patrick Carrick, Brad Masten, Tyler McGuigan, and Judy Mysels. They were tasked with navigating a new set of guidelines established by the PC(USA), which included new forms that were rolled out halfway through the committee's work, requiring them to start over and resubmit some of their paperwork. They diligently met on a regular basis, maintained communication with the Pittsburgh Presbytery through a liaison, and followed the directions given to them.

After reviewing dozens of Pastor Information Forms, they conducted 3 rounds of interviews, narrowing the search down to 2 candidates, leading us to formal presentation of Pastor Michael to the congregation at a special meeting on December 7. Upon approval of the call by the congregation, the recommendation was brought before Presbytery on Thursday, December 11 and was approved. We can now joyfully call Rev. Rucker our Pastor! Look for details on his formal installation service in the coming month. Happy New Year and welcome Pastor Michael!



JANUARY 2015 Worship Schedule

JANUARY 4

Epiphany Sunday

We're back in the sanctuary to welcome the arrival of the Magi to the city of Bethlehem when Jesus was about two years old. The Sunday worship will include the Celebration of the Lord's Supper.

JANUARY 11

Baptism of the Lord Sunday

Ordination & Installation of Officers

During Advent, we talked about Jesus' visit to John to be baptized in the River Jordan. That baptism opened up an entirely new world to

Jesus and John—and the ministry of Jesus is off to an inspiring and inspired start.

JANUARY 18

Emerging Worship

The Worship Ensemble will be back leading us in some stirring and meaningful songs of praise.

JANUARY 25

Annual Congregational Meeting

In worship we will read about the beginning of Jesus ministry. Then we will look at the ministry of FPCE!

STAFF DIRECTORY

120 East Swissvale Avenue
Pittsburgh, Pennsylvania 15218
Phone: 412-241-4613
www.fpcedgewood.org

Pastor.....	The Rev. Michael P. Rucker mprucker@fpcedgewood.org
Pastor Emeritus	Dr. Gerald Hollingsworth
Minister of Music.....	Shaun Cloonan music@fpcedgewood.org
Organist & Pianist.....	Sunny Sakai sunnysakai4@gmail.com
Section Leaders.....	Tyler McGuigan Mandy Rineer
Interim FROGS Director	Flo Raisig frogs@fpcedgewood.org
Office Manager	Judy Mysels office@fpcedgewood.org
Building Manager	Rob Mysels building@fpcedgewood.org
Nursery Attendant.....	Kristi Cloonan LittleK815@aol.com

Office Hours:
Monday–Friday
9:00AM–2:00PM



News from the Edge ,
is the monthly newsletter of the
First Presbyterian Church of Edgewood.
If you have information you would like
to include in the next issue, email Judy Mysels
at office@fpcedgewood.org by
the 15th of the prior month.
Sponsorship is available for \$40 per month.

PASTOR'S

POINT OF VIEW



Michael P. Rucker
Pastor

HAPPY NEW YEAR EVERYONE !

Sometimes the word “religion” gets a bad rap. It often is thought of as the formal, dry, going-through-the-motions kind of faith that certainly can be found in nearly any faith gathering. Perhaps you’ve heard the saying—“*Religion is for people who are afraid of going to hell; spirituality is for those who’ve been there.*” A not very complementary view of “religion.”

I read something the other day that redeemed the word for me. The word “religion” comes from the word “religare” which means “to bind” or “to re-tie.” Religion is about reconnecting, re-binding reality. When Jesus said, “**The Father and I are one.**” (John 10:30) he was expressing what is at the heart of “true religion.”

The Apostle Paul called members of the church, “**Ambassadors for Christ...God is making an appeal (to the world) through us. So we are to be reconciled (re-connected!) to God and ministers of reconciliation to the world.**” (II Corinthians 5: 17-20)

As we enter this new year together, perhaps we can re-connect with our “true religion.” Perhaps we can intentionally and openly re-connect with the One who created us, redeemed us and empowers us. Then, and only then will that “true religion” inspire us to reconnect to the community we serve on behalf of Jesus Christ, the Risen One. The One who is making all things new!

Pastor Michael

This month's

news from the **EDGE**

is sponsored by

Connie Black

Officers Elected at December Congregational Meeting

At the December 2014 congregational meeting, the slate of nominees for church leadership was presented and voted upon. The following members have been elected to the church councils and positions of leadership. An asterisk (*) indicates second consecutive term for the individual listed. New Deacons and Ruling Elders will be ordained to office, and returning members will be installed for a new term during our worship service on January 11. Session and Deacon terms are for 3 years, auditors and nominating committee members are for 1 year appointments.

Session Class of 2017

Chris Apessos *
John Foster
Tyler McGuigan *
Timothy McKee

Deacons Class of 2017

Paul Breakwell
Marilyn Lobert *
Patti Mielke *
Amy Moore
Connie Ochs

2015 Nominating Committee

Evelynne McKee
Angel Lehrian
Pam Thompson
Appointed Session Member
Appointed Deacon Member

2015 Auditor

Tim Carr



Per Capita

The Westminster Confession of Faith says, “all believers are, therefore, under obligation to sustain the ordinances of the Christian religion where they are

already established, and to contribute by their prayers, gifts, and personal efforts to the extension of the Kingdom of Christ throughout the whole earth” (*The Book of Confessions*, 6.058).

Per capita is a fundamental way in which all of the nearly 11,000 congregations and mid councils of the Presbyterian Church (U.S.A.) are connected and participate in the work of the wider church.

Because it is rooted in the connectional and covenantal nature of the Presbyterian church, as affirmed by the ordination vows taken by elders and ministers of the Word and Sacrament, per capita could be called the Presbyterian Covenant Community Fund.

Why is per capita important? Per capita brings Presbyterians together — literally!

Presbyterians are connected in many ways, including our church government. We believe we discern best what God is calling us to do when we gather as mid councils, “seek[ing] together to find and represent the will of Christ” (*Book of Order F-3.0204*).

Per capita dollars pay for the costs of holding a General Assembly — including paying for the

travel, room and board of commissioners and advisory delegates, several of whom would not be able to afford these expenses on their own.

Per capita makes it possible for Presbyterians to govern ourselves the way we do. Presbyterians have a form of government built upon shared power and mutual accountability as we seek together to find and represent the will of Christ. By providing the primary means through which commissioners and advisory delegates can gather to do their work, per capita dollars help to undergird our governance system.

Our Constitution provides a moral and theological compass that builds community and calls us to Christian faithfulness in gratitude to God. Per capita makes possible our effort for visible unity of the church of Jesus Christ.

The PC(USA), as with other faith traditions and denominations, is but a small part of the one church of Jesus Christ. We affirm that God’s call is for the church to be one.

Per capita makes it possible for us to maintain our historical awareness. Our historical heritage helps us make informed decisions for the future. The Presbyterian Historical Society is our national archives and historical research center. It collects, preserves, and shares the history of the American Presbyterian and Reformed tradition.

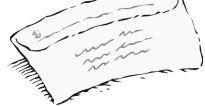
The per capita rate for 2015 has been set at \$27.85 per FPCE member.

Call for 2014 Reports

On Sunday, **January 25** immediately following worship, the Annual Meeting of the Congregation will be held to receive the 2015 budget and annual reports of the various ministries of the church.

If you are the staff member, chair or secretary of a ministry team or organization within the church, please have your narrative report into the church office by **January 20**. It can be given in hard copy or e-mailed as an attachment to Judy Mysels at office@fpcedgewood.org.

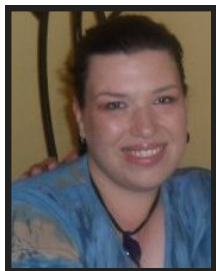
Offering Envelopes



Boxed 2015 envelopes are available at the side entrance and front entrance of church. They can also be mailed to you if interested.

Planning for 2015

The next planning meeting for the remainder of the 2014-15 church year will take place **after worship January 11 in the Gathering Place**. All elders, deacons, staff, and other organization leaders should plan to attend as we finalize plans for Jan-August.



P.W. Corner

Lori Stutz
Moderator

So cold, one can barely feel one's nose. I'm kidding, of course! The month of

December was not just sweet and warm because of the fabulous warmer weather. It was equally warm, sweet, and fabulous because of our two circles' Christmas parties. The ladies of the daytime circle enjoyed a Christmas tea hosted by Pat Mielke and Tina Nine. Patti even shared her friendship short bread recipe with us. Later on that week Tina opened her home up for the Joy circle party. We all had such a great time together. We even doubled the amount of guests from last year. Special thanks to Jeff and Tina Nine for opening their home to us! I think I speak for all of us when I say we all had such good time; which was probably why we didn't want to leave!

Over the winter months PW will be a little more on the quiet side. It was decided last year to change meeting times. So in regards to meetings we will have our next planning meeting and business meeting in March. However, our daytime circle will still meet through the winter months. Remember daytime circle meets the second and forth Thursdays of each month from 1 until 230pm. If you have any questions regarding this circle please contact Tina Nine. Also, our Joy circle will meet through the winter months. Joy circle meets the last Monday night of the month at 7pm in the lounge. If you have any questions or ideas you may contact Sallie Monk.

Sallie is also the chair of our Flea market this year. So if you have items, ideas, suggestions, or may want to help, please contact Sallie. Finally, just to let everyone know that we received 65.00 for the Thank offering this year. Thanks to everyone who gave. Last but certainly not least; on behalf of PW we'd like to wish everyone a happy, healthy, and prosperous New Year, filled with many blessings!!!

Deacons' Doings...

It is certainly a busy time of year for everyone, and we would like to say thank you for taking the time to purchase all the wonderful gifts for the Angel Tree. We received over 200 gifts. I know these families and Action Housing are grateful for all the donations.

A big thank you to Shadyside Academy for over 2,600 items for our Food Pantry, which has been used quite often the last few months.

Harvest Baskets and poinsettias were delivered to our Friends of the Church during the holiday season. A special thanks to FROGS for the cute snowmen they made which were placed in the poinsettias. Our friends of the Church are all so grateful that they are in our thoughts and prayers. Please keep in touch with them; they would love to hear from you!

Get your taste buds going—another hoagie sale is just around the corner.

We hope to see all of you at the Congregational Luncheon on January 25 for wonderful fellowship and a pancake brunch.

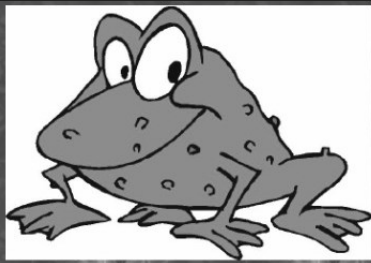
To You and all you hold dear,

A Blessed Christmas

and a Happy New Year—

Mary Ann Hartman, Moderator





F.R.O.G.S.

AFTER SCHOOL PROGRAM

(FRIENDS, READING, & OTHER GREAT STUFF)

FROGS Update

by Flo Raisig
Interim FROGS Director

Note: the November FROGS article was inadvertently left out of last month's newsletter. Here is a combination of the November and December FROGS activities.

November was a busy month for FROGS. We made pine cone turkeys. To gain an appreciation for the first Thanksgiving, the children made butter. They enjoyed it with crackers at snack time.

FROGS had another great afternoon with PACES and Emily and Josh Lilly. This time the children used a variety of math skills to learn about urban planning. They divided into groups, planned and built a cardboard and plastic city. Some of our children struggle with math at homework time. The afternoon with PACES showed them that math skills are necessary and fun.

In this time of thanksgiving, we give thanks to Emily Lilly and PACES. We thank the congregation for the yummy snacks they've provided. A special thank-you to the devoted staff of FROGS volunteers.

December has been a crafty time for FROGS. We made snowmen to accompany the poinsettias the Deacons delivered, and some to hang on family trees. We made other ornaments and gifts. The first Thursday of each month is stamp club day. Ranger Tim Manka started us off by sharing old Christmas stamps with the children. They each chose 10 stamps to put in their albums. Some of the stamps were older than their parents!

The FROGS program is enjoying the holiday break and will resume on January 6, 2015.

Men's Group

Come and join us each 7:00PM every 2nd and 4th Monday at Foli's (1050 Brinton Road) for a great time of food, fun and fellowship with like-minded Christian guys. We talk about all sorts of things. If you want a place to chat and have fun with other guys in the church just meet us there. No appointment necessary. Contact Jeff Nine, Dan Mielke or Gregg Baldwin if you have any questions.

FOLI'S

Wednesday Night Bible Study - "An Eagle's Eye View of the Bible"

Beginning January 21st and continuing each Wednesday from 7:00-8:00PM in the lounge we will be taking a week-by-week tour of the books of the Bible. We will start with Genesis on January 21st and go through one book each week for the next year and half or so. If you are looking for a new Bible study to be part of, now is the time to join us. It is low key and you don't need to study anything beforehand. Just bring your favorite Bible and join us as we unwrap the story of God in a fun and interesting way.

Tuesday Book Club

The weekly book club meets every Tuesday at 10:00AM. WE WILL BEGIN AGAIN starting January 2015. We are reading "Killing Jesus" by Bill O'Reilly and Martin Dugard; Come join us in January!

Confirmation Class

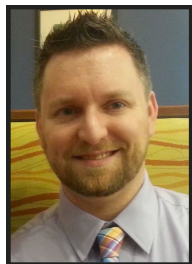
Our Confirmation Class is meeting regularly and with enthusiasm. The confirmands are: Travis Allabon (grandson of Helen Ebken), Alaijah Clements (granddaughter of Lorraine Douthett), Cassidy and Hayley Dujmic (daughters of Deborah Harris), Abbey Lehrian and Amber Wilson.

Youth Sunday School

Sunday School for our youth will begin again on January 4th after the "Passing of the Peace" during worship. Sunday School meets each week except for Emerging Worship Sundays.

CHRISTIAN

E D U C A T I O N



Shaun Cloonan
Minister of Music

MUSIC Ministry

Happy New Year!

What a glorious Advent and Christmas we had here at FPCE together. From the inclusion of Taizé music during worship to observe Blue Christmas to Lessons and Carols with the joined forces of our Sanctuary Choir and the North Hills Singers; hearing the beautiful music from Inori and Sunny Sakai to singing the liturgy of Communion to the tune of Greensleeves during a wind storm on Christmas Eve, we've had a little bit of something for everyone on our journey to Bethlehem.



Speaking of Christmas Eve, a quick note about what exactly happened while we "improvised" during the singing of Communion music...apparently a transformer blew on Hutchinson Ave while those high winds were making the church roof sound like it was about to cave in. A very brief power surge that flickered the lights and made the sound system pop a few times reset the electronics on the organ. When

Sunny began playing Greensleeves, the keyboard stopped responding on the organ, forcing her to the piano. Fortunately, we were singing a familiar tune and Tyler and I continued to lead the responses while Sunny made a mad dash for the piano, followed one verse at a time by the 2 of us. As of the writing of this article, Sunny has been back in to practice and the organ is seemingly back to normal again. Needless to say, we did not intend to add to the drama of the Nativity story, but appreciate everyone's flexibility and understanding!

As we move into 2015, we will get back on track with our routine of emerging worship on the 3rd Sunday of the month and classic the other Sundays. The Worship Ensemble typically meets on the Wednesday evening prior to the emerging service to go over the music together. Choir meets on all of the classic worship Sundays beginning at 9:30 in the choir room. All who feel the call upon their hearts to "make a joyful noise" are invited to join us!

We'll also continue our journey through the lectionary (we're in "year B" now, which focuses on the gospel of Mark), which will allow us more opportunities to explore our *Glory to God* hymnal together. Hopefully in the coming months, as we introduce a new hymn or praise song, you'll find a new favorite to add to your personal playlist.

Blessings to you all as we venture into this season of new beginnings together.

The Bulletin Board

*Sharing in the
joys and
concerns
of our family &
friends at FPCE*

- Traveling mercies and best wishes to Jeff Nine, who is headed to Mexico/Southern Arizona on an intercultural immersion trip for his seminary from January 7-16. He will be working with an organization called Borderlinks, studying and experiencing intercultural issues at the border of the US and Mexico.
- The congregation experienced a joyful and uplifting morning of song, when the North Hills Singers, directed by Shaun Cloonan, sang during the worship service on December 21. A lovely and fun choral concert followed the service. Thanks also to the FPCE choir members for providing a tasty lunch for the students afterward in the Gathering Place.
- Help us join in celebrating a big day—January 13th Mariah Mysels turns 21! Happy Birthday Mariah!
- Thank you to Lorraine Douthett for all of the behind-the-scenes work on sanctuary decorations as well as preparing our fellowship time each week.
- Thanks to Ruth Miller, Florence Pickels, and Flo Raisig for their time arranging the beautiful poinsettias on the chancel for Christmas Eve.

January

Sunday	Monday	Tuesday	Wednesday	Thursday	Friday	Saturday
			C=Choir Room GP=Gathering Place L=Lounge O=Office PS=Pastor's Study S=Sanctuary SC=Scout Room SR=Social Room	1 NEW YEARS DAY Church Office Closed	2 8:00 AA (SR)	3 8:30 AA (SR)
4 Epiphany Sunday 9:30 Choir (C) 9:45 Pollyanna (GP) 9:45 Adult Class (L) 11:00 Worship (S) Communion 12:15 Fellowship (L)	5 7:00 Scouts (SC)	6 10:00 Book Club (L) 3:45 FROGS 7:00 Deacons (L) 7:00 AA (SR)	7 7:00 Bible Study (L)	8 1:00 PW Circle (GP) 3:45 FROGS	9 8:00 AA (SR)	10 8:30 AA (SR)
11 9:30 Choir (C) 9:45 Pollyanna (GP) 9:45 Adult Class (L) 11:00 Worship (S) 12:15 Fellowship (L) 12:15 Planning Meeting (GP)	12 7:00 Men's Group 7:00 Scouts (SC)	13 10:00 Book Club (L) 3:45 FROGS 7:00 Session (GP) 7:00 AA (SR)	14 7:00 Worship Ensemble (S) 7:00 Bible Study (L)	15 3:45 FROGS 7:00 Grief Group (L)	16 8:00 AA (SR)	17 8:30 AA (SR)
18 9:30 Worship Ens. 9:45 Pollyanna (GP) 9:45 Adult Class (L) 11:00 Emerging (S) 12:15 Fellowship (L)	19 OFFICE CLOSED 7:00 Scouts (SC)	20 10:00 Book Club (L) 3:45 FROGS 7:00 AA (SR)	21 7:00 Bible Study (L)	22 1:00 PW Circle (GP) 3:45 FROGS	23 8:00 AA (SR)	24 8:30 AA (SR)
25 9:30 Choir (C) 9:45 Pollyanna (GP) 9:45 Adult Class (L) 11:00 Worship (S) 12:15 Cong. Mtg. Luncheon (SR)	26 7:00 Men's Group 7:00 Joy Circle (L) 7:00 Scouts (SC)	27 10:00 Book Club (L) 3:45 FROGS 7:00 AA (SR)	28 7:00 Bible Study (L)	29 3:45 FROGS	30 8:00 AA (SR)	31 8:30 AA (SR)



First Presbyterian Church of
EDGEWOOD
The Community Church

120 E. Swissvale Avenue • Pittsburgh, PA 15218

HAPPY NEW YEAR

2015

**A monthly support group
for people surviving the
loss of a love**



First Presbyterian Church of Edgewood
Rev. Michael Rucker, Interim Pastor
120 East Swissvale Avenue
Pittsburgh, PA 15218

412-241-4613
office@fpcedgewood.org
www.fpcedgewood.org

GRIEVING SPACE

at the First Presbyterian Church of Edgewood

Here, we understand that finding the
space to grieve can sometimes be every
bit as challenging as the loss itself.

Should you need us, our support group is here.

Meetings: every third Thursday of the month, 7pm

Call us to let us know you are coming: 412-241-4613

Individual support with a certified grief counselor is also available through:



Edgewood Psychological Services